



Figure 1. Location of Paradox Basin.

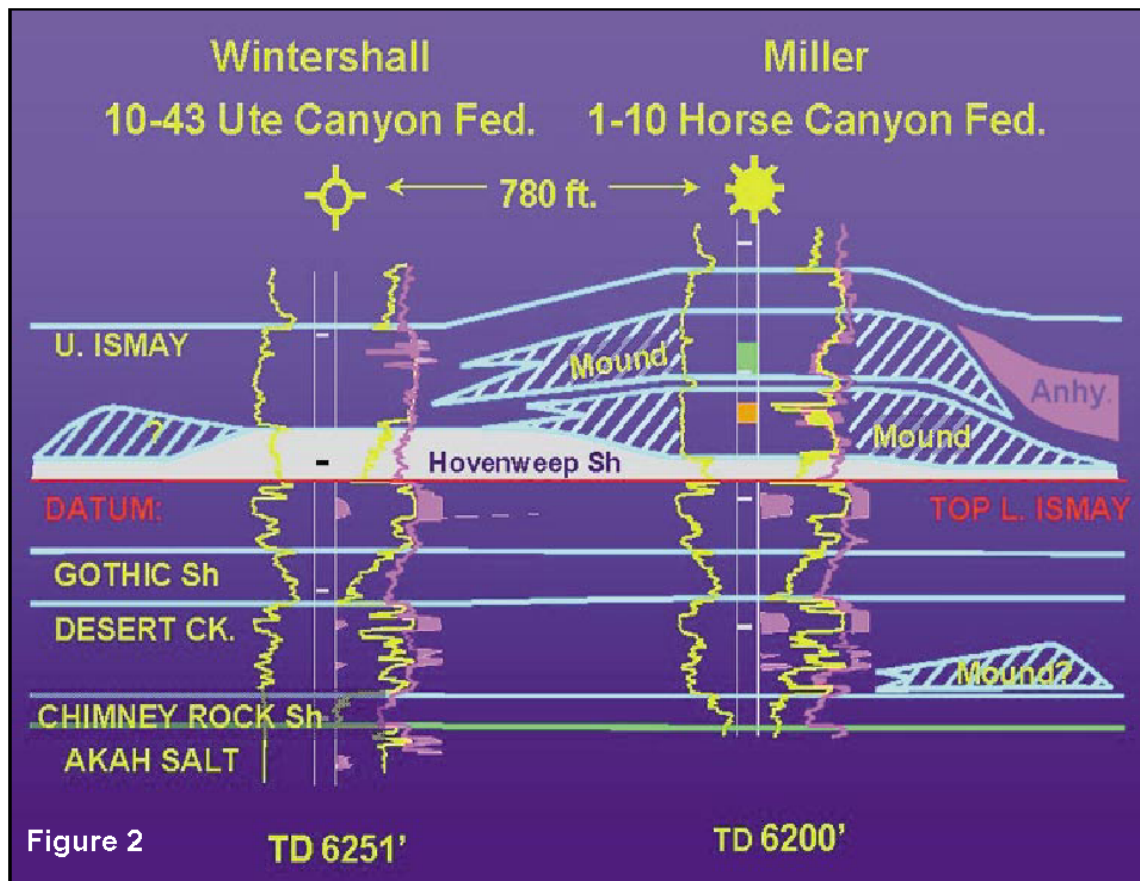


Figure 2. Stratigraphic cross section through the discovery.

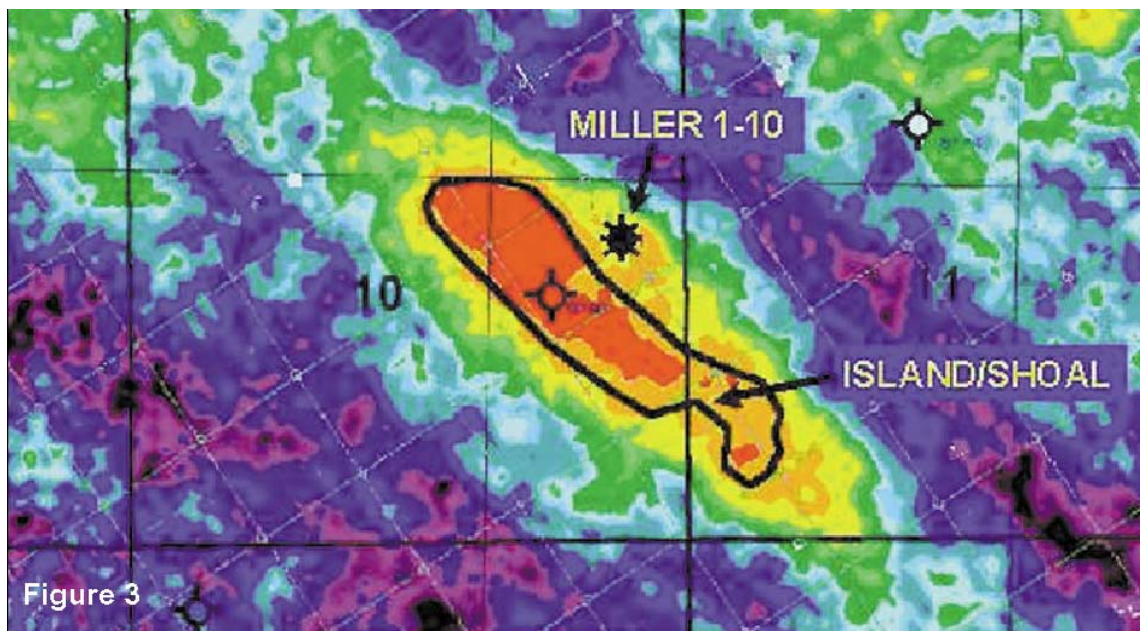


Figure 3. Hovenweep amplitude map indicating Hovenweep thickness.



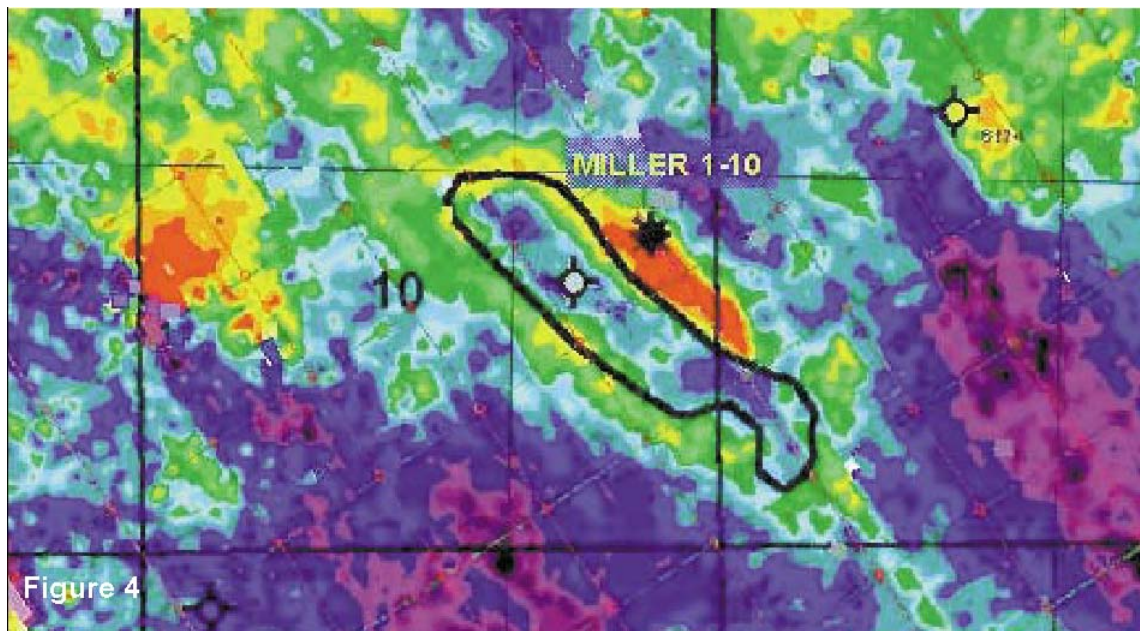


Figure 4. Upper Ismay isochron map showing atoll character of algal mounds.

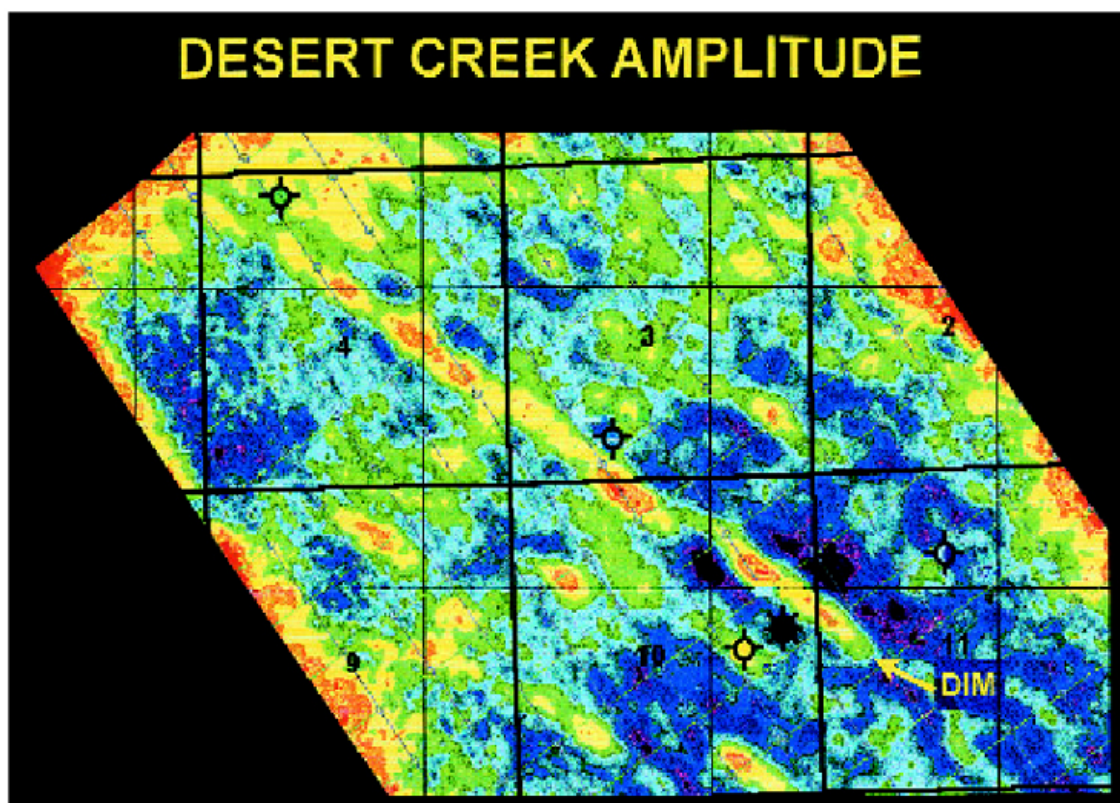


Figure 5. Desert Creek amplitude map showing NW-SE lineament.



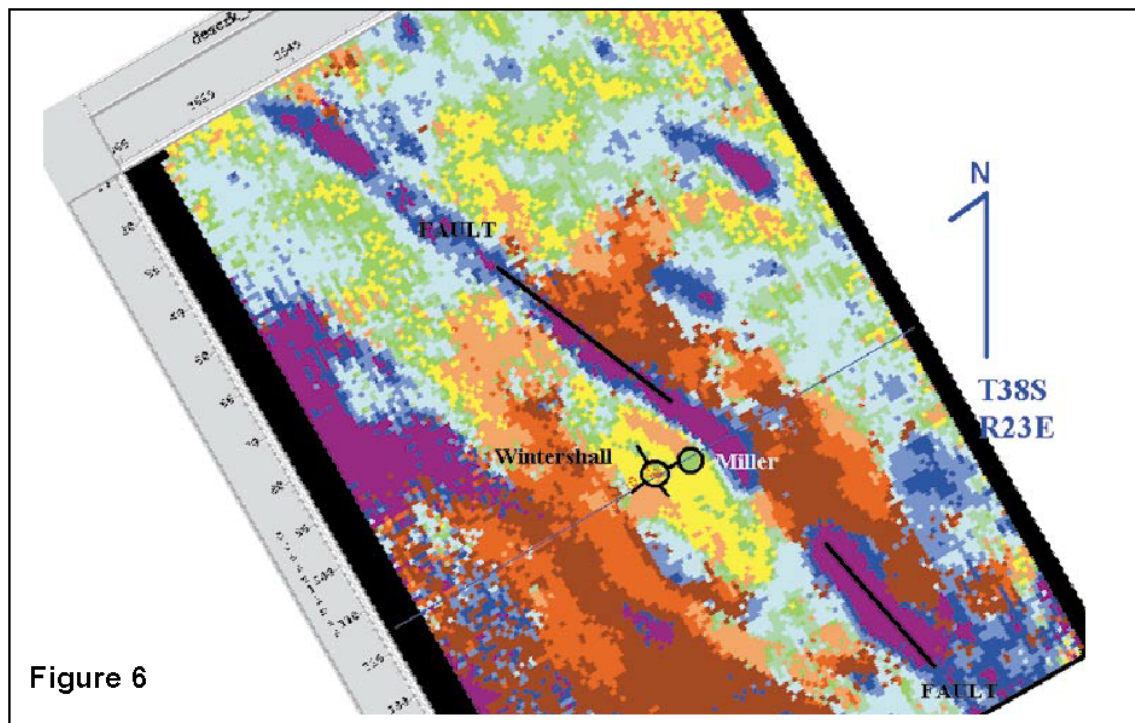


Figure 6. Wavelet classification map output at Upper Ismay horizon showing NW-SE lineament.

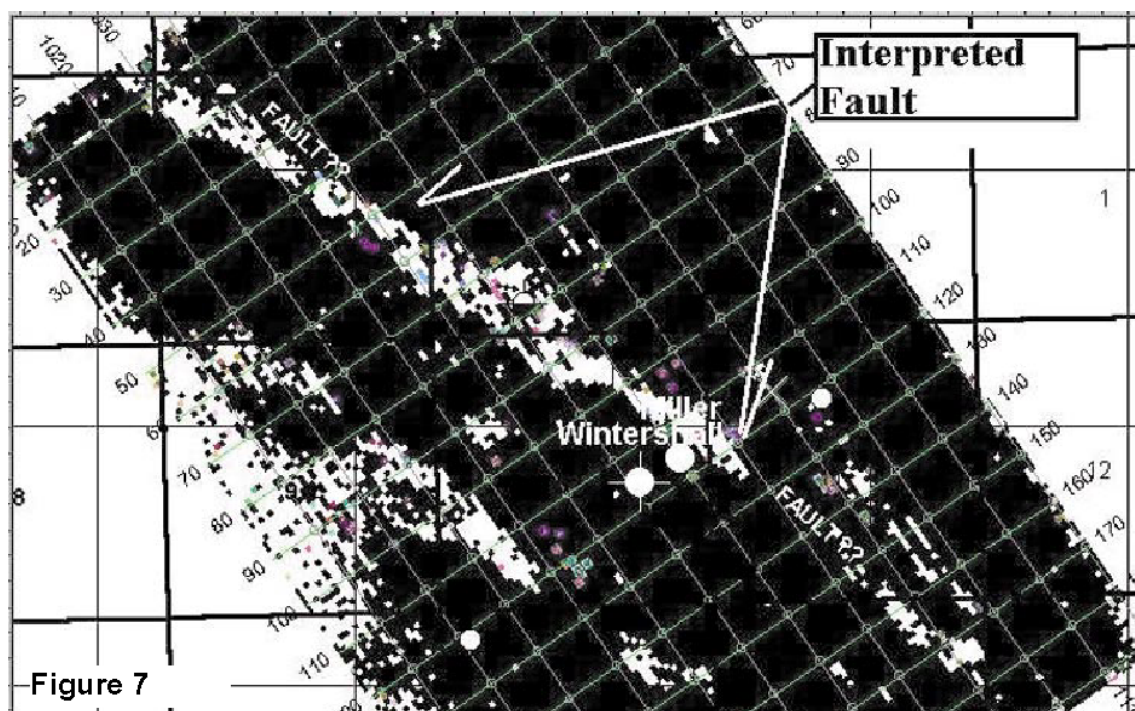


Figure 7. Multivariate attribute analysis at Upper Hovenweep showing NW-SE lineament.



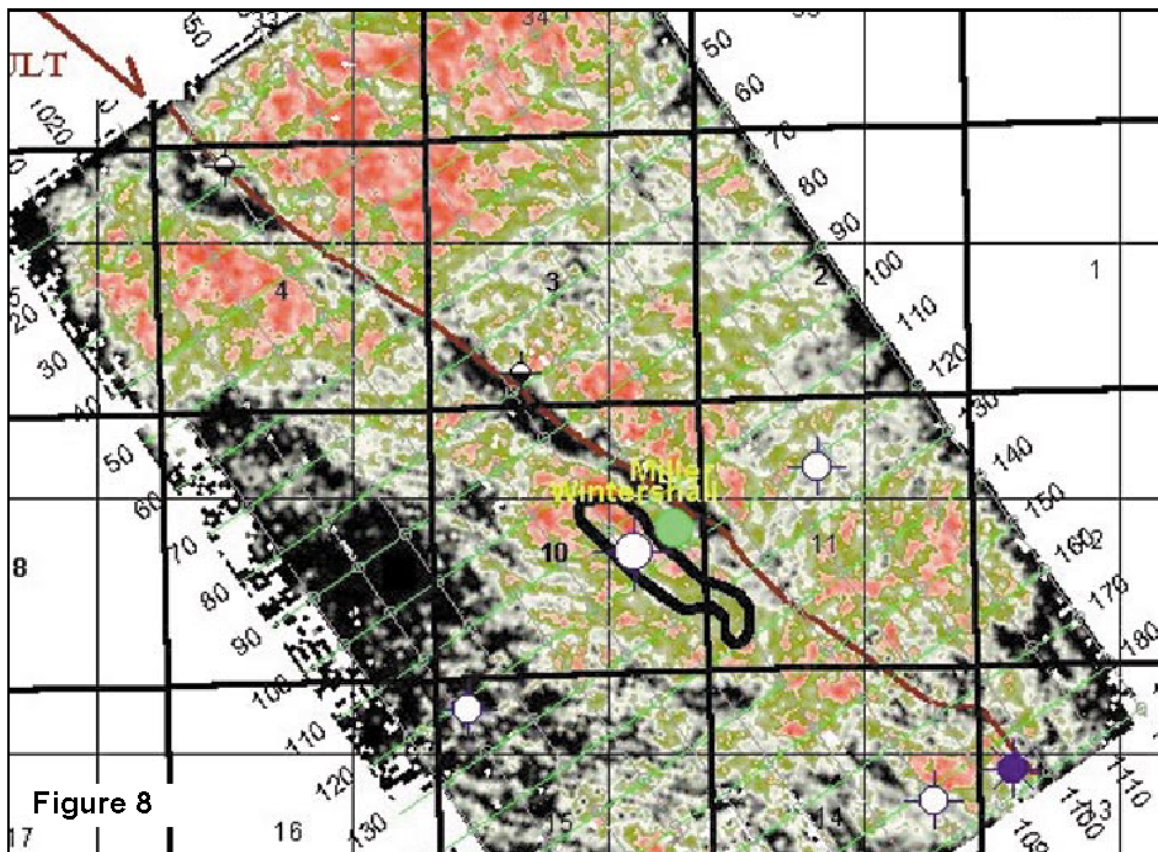


Figure 8. Edge detection horizon slice through Upper Ismay.

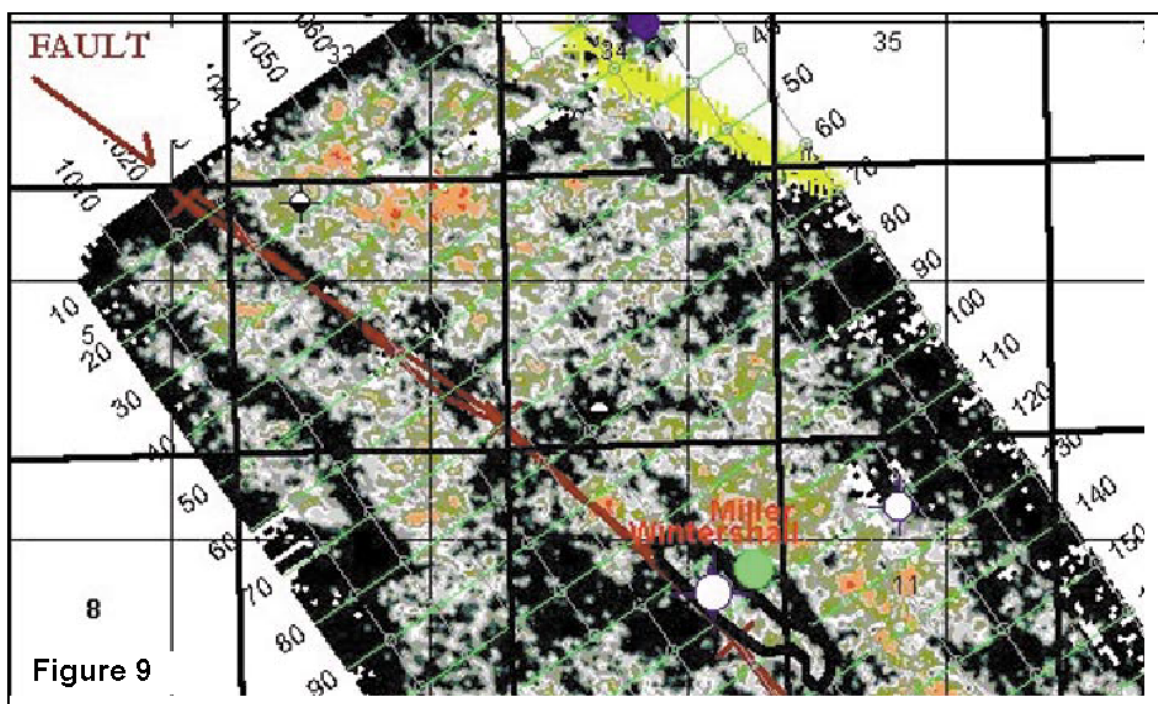


Figure 9. Edge detection horizon slice approx. 1500 ft below Upper Ismay.



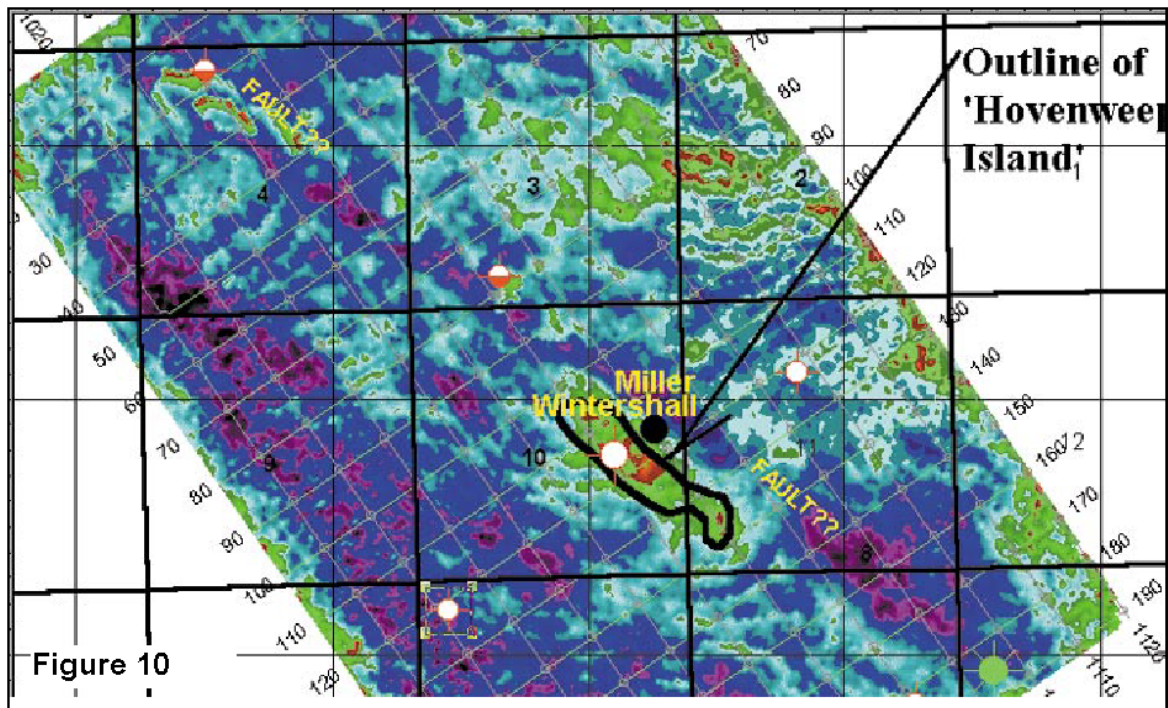


Figure 10. A Horizon slice through the top of the Akah Salt - note the amplitude dim approximates the Hovenweep “Island” area leading to postulation of salt dissolution.

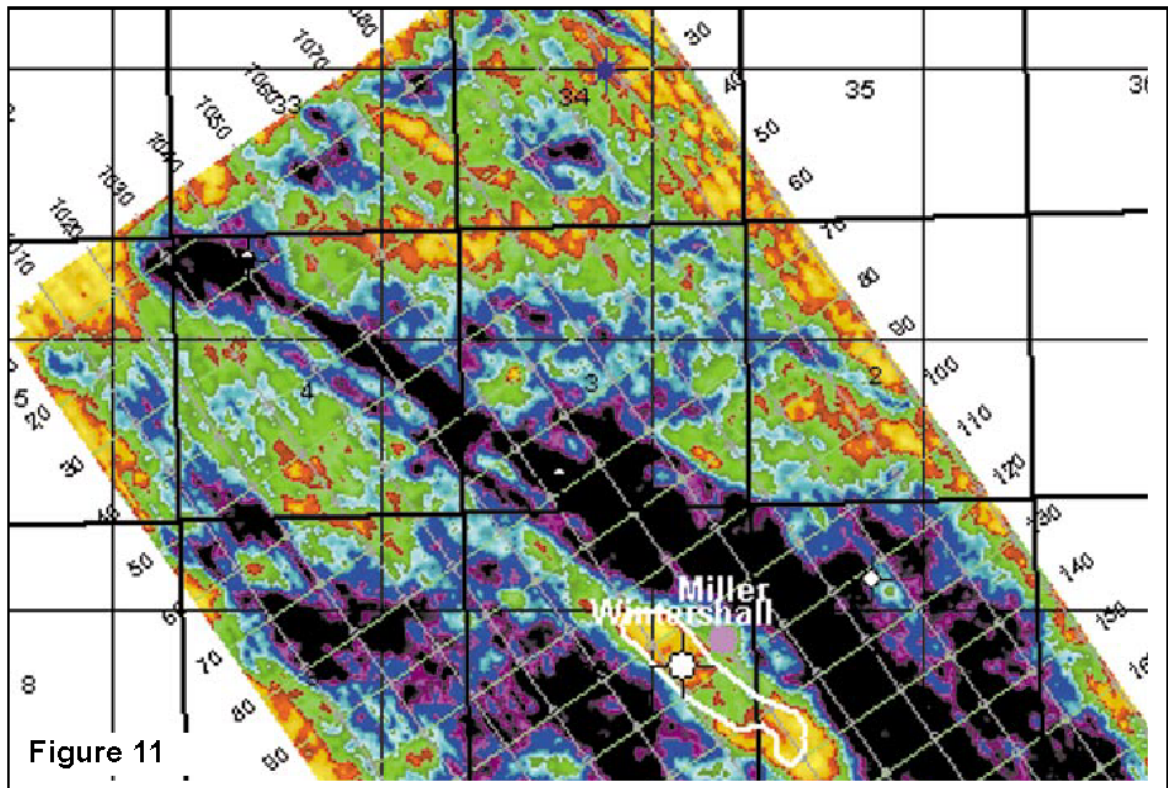


Figure 11. Spectral decomposition at the Upper Ismay showing NW-SE fault along with other features.

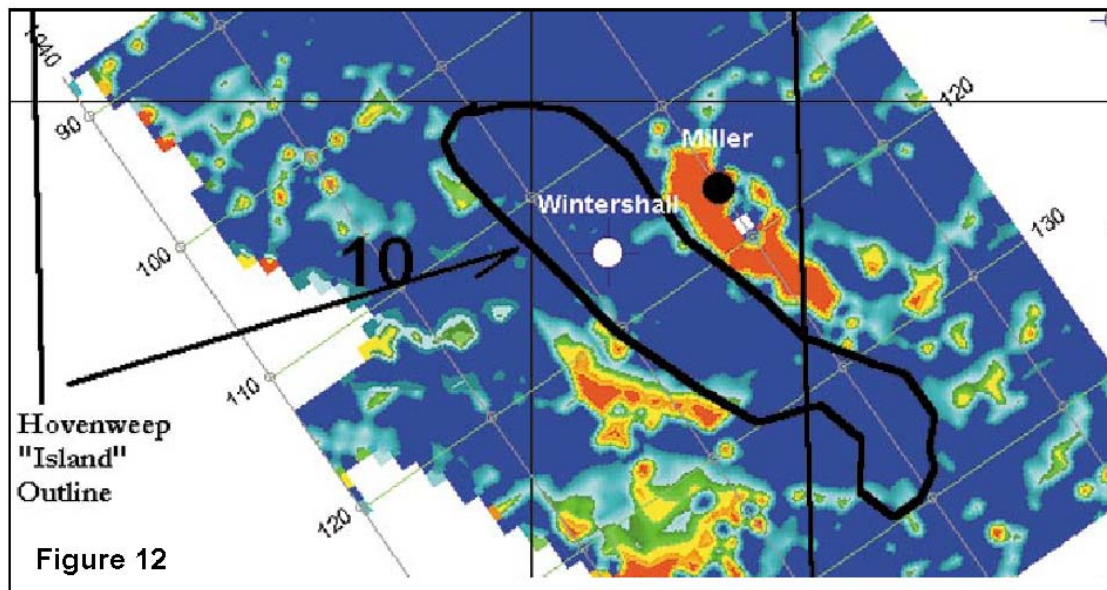


Figure 12. Cross-correlation with trace from successful well indicating additional locations.